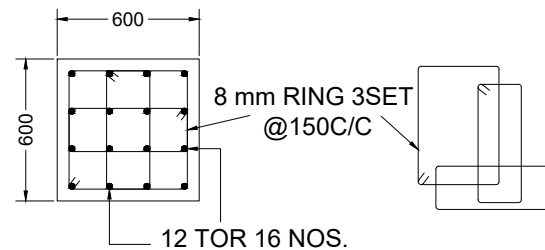


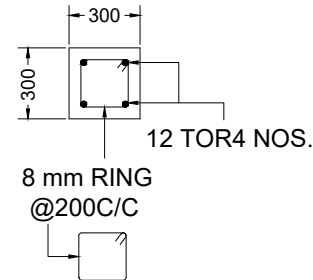
**NOTES :-**

1. ALL DIMENSIONS SHOWN ARE IN MM UNLESS OTHERWISE MENTIONED.
2. CONTRACTOR SHALL BE CAREFULLY STUDY DRAWINGS AND SEEK CLARIFICATION OTHERWISE COMPANY IS NOT RESPONSIBLE FOR ANY BAD WORKMANSHIP OF CONCRETE WORK.
3. PROVISION TO BE MADE FOR A RAIN WATER OUT LET BELOW THE GROUND LEVEL OF FINISHED R.C.C. SURFACE.
4. RAMP AND COLUMN HEIGHT SHOULD BE MAINTAIN AS PER YOUR SITE CONDITION. (VARIABLE IN CASE OF BLACK COTTON SOIL AND DIFFERENT TYPE OF SOIL BEARING CAPACITY OF LAND AND COLUMN).
5. USE CONCRETE MIX M-30 FOR ALL R.C.C. WORK.
6. USE 43 GRADE BLENDED CEMENT BRAND TO BE APPROVED BY ARCHITECT AS PER IS : 269 AND AGGREGATES AS PER IS : 383.
7. #DENOTES TMT STEEL OF Fe415 / 500 GRADE AS PER IS : 1786.
8. Ø DENOTES ROUND STEEL OF Fe 415 / 500 GRADE AS PER IS : 1786.
9. ALL COLUMN TOP LEVEL MAINTAIN ±5MM.
10. R.C.C GRADE 1:2:4 & P.C.C. GRADE 1:3:6.
11. EACH COLUMN DOWNWARD LOAD NOT MORE THAN 20 TON MAXIMUM.
12. BENDING BAR AS PAR IS : 13920/-1993.
13. CONCRETE GRADE AS PAR IS : 456/-2000.
14. CORROSION PROOF STEEL BAR.
15. ASSEMBLY OF REINFORCEMENT BAR AS PER IS :2502.
16. S.B.C = 15 TON / SQ MT. AT 1.5 MT DEPTH FROM G.L.(AS PER SOIL REPORT)

**COPING (300X300)**

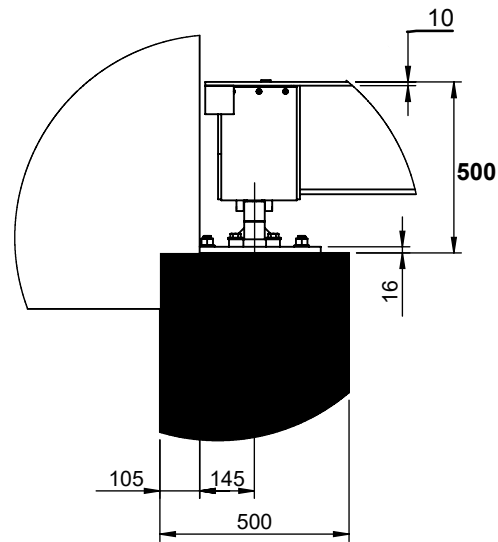
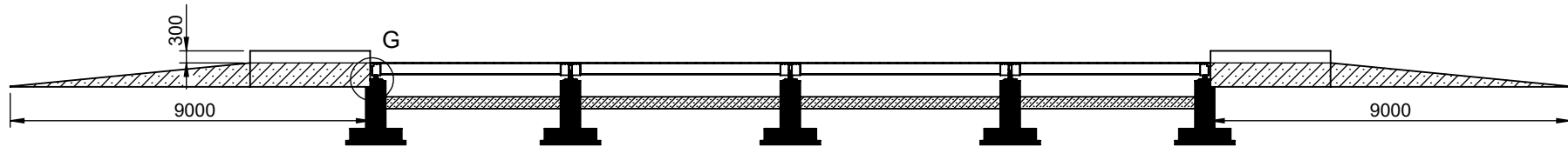
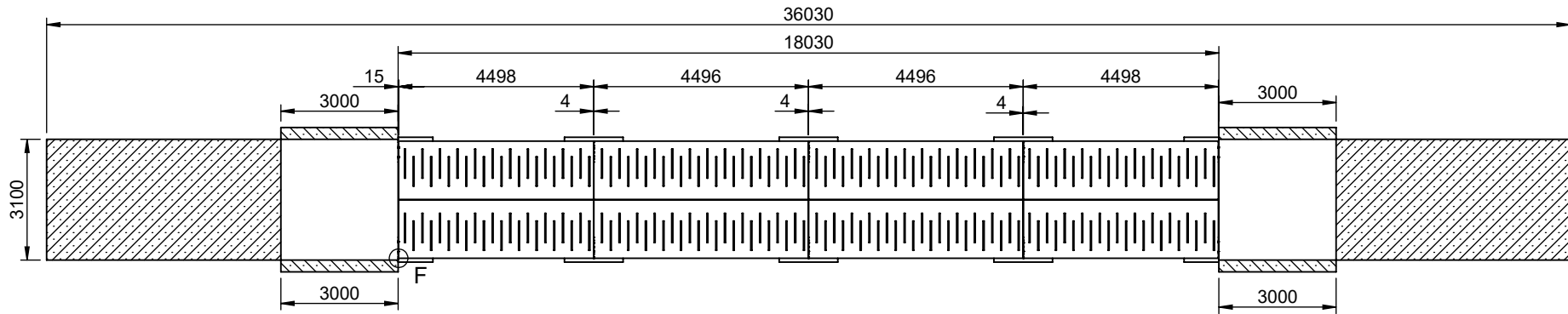


**COLUMN - C (600X600)**

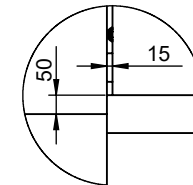


**TIE BEAM(225X225)**

<b>EGLE</b> SCALE MANUFACTURING WORKS	
302,AHOKA,NR.GOLDEN TRI-ANGLE BUILDING,SARDAR PATEL STADIUM ROAD AHMEDABAD - 380 014 GUJARAT,INDIA PHONE NO : (079) 26560311	
PARTY NAME :	
PO . NUMBER :	
SCALE : NTS	DATE : 18/02/2022
TYPE : (18M X 3M)	DRG NO : 1
NIRAJ DRAWN BY :	HARSHAD CHECKED BY :
REV DRG NO : 0	
DRG SHOWING FOUNDATION PLAN FOR MODULAR PITLESS TYPE WEIGH BRIDGE	

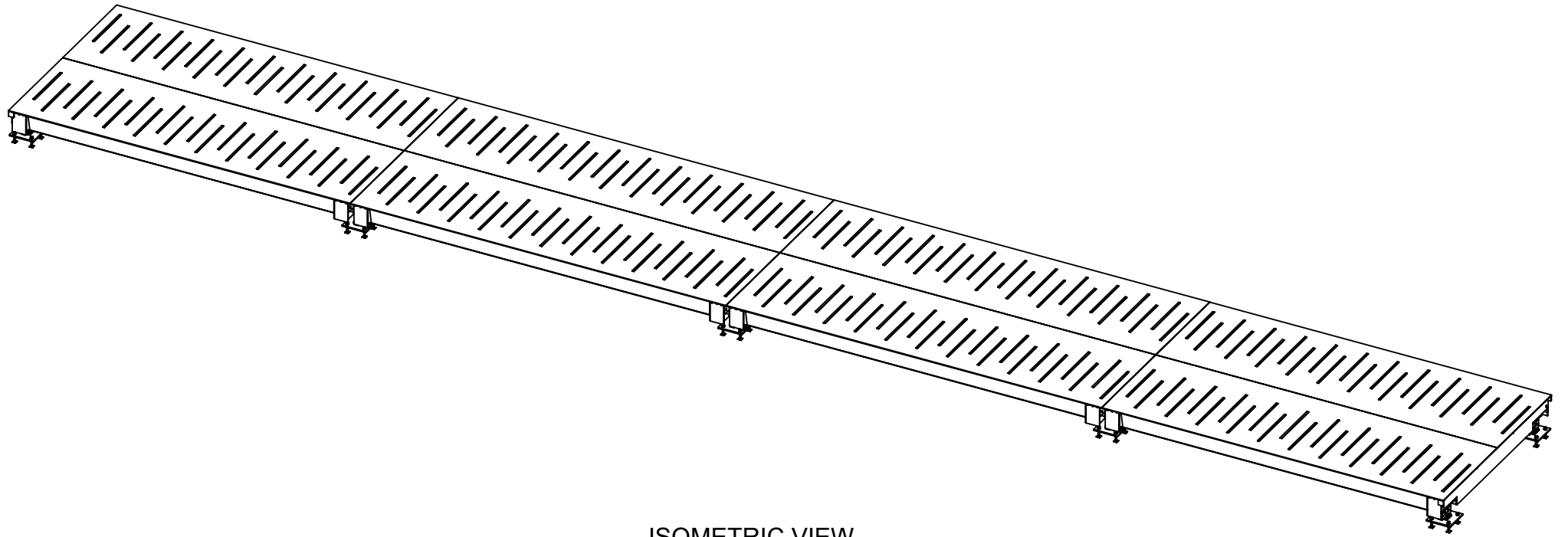


DETAIL G



DETAIL F

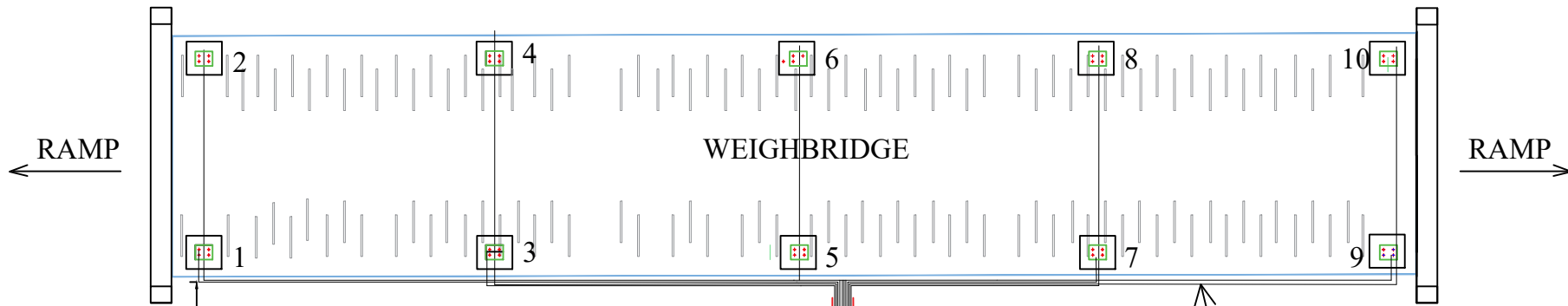
REFERENCE DRG. No. _____					PART <b>FOUNDATION ASSEMBLY OF PITLESS DESIGN</b>	
DRAWN	NRB	SIGNATURE	DATE 28/01/2022		PRODUCT <b>18 X 3 Mtrs. WEIGHBRIDGE</b>	
CHK'D	PKP			QTY. _____	MATERIAL: _____	
APP'VD	HKP			SCALE: N.T.S.	CLIENT	
<b>EAGLE SCALE MANUFACTURING WORKS.</b>				DWG NO. <b>ESMWMUR-18B</b>		REV. <b>R1</b>



ISOMETRIC VIEW

NOTES :-  
 ALL DIMENSIONS ARE IN mm.  
 REMOVE ALL SHARP CORNERS.

REFERENCE DRG. No. _____					PART ISOMETRIC VIEW ASSEMBLY	
	NAME	SIGNATURE	DATE		PRODUCT 18 X 3 Mtrs. WEIGHBRIDGE	
DRAWN	NRB		28/01/2022	SHEET 5 OF 7		MATERIAL: _____
CHK'D	PKP			QTY. _____		CLIENT
APPV'D	HKP			SCALE: N.T.S.		DWG NO. ESMWMUR-18D
EAGLE SCALE MANUFACTURING WORKS.					REV. R1	



CABLES FROM  
LOAD CELL 16 MTR EACH LOAD CELL  
1 TO 10  
(CONDUIT PIPE Ø 50 MM)

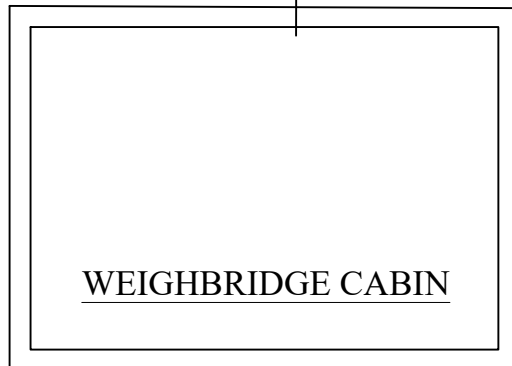
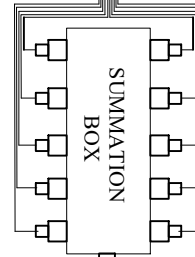
LOAD CELL CABLE IN  
WELDED M.S PIPE WITH  
WEIGHBRIDGE

3 MTR (MIN)

EARTH PIT  
FOR  
WEIGHBRIDGE

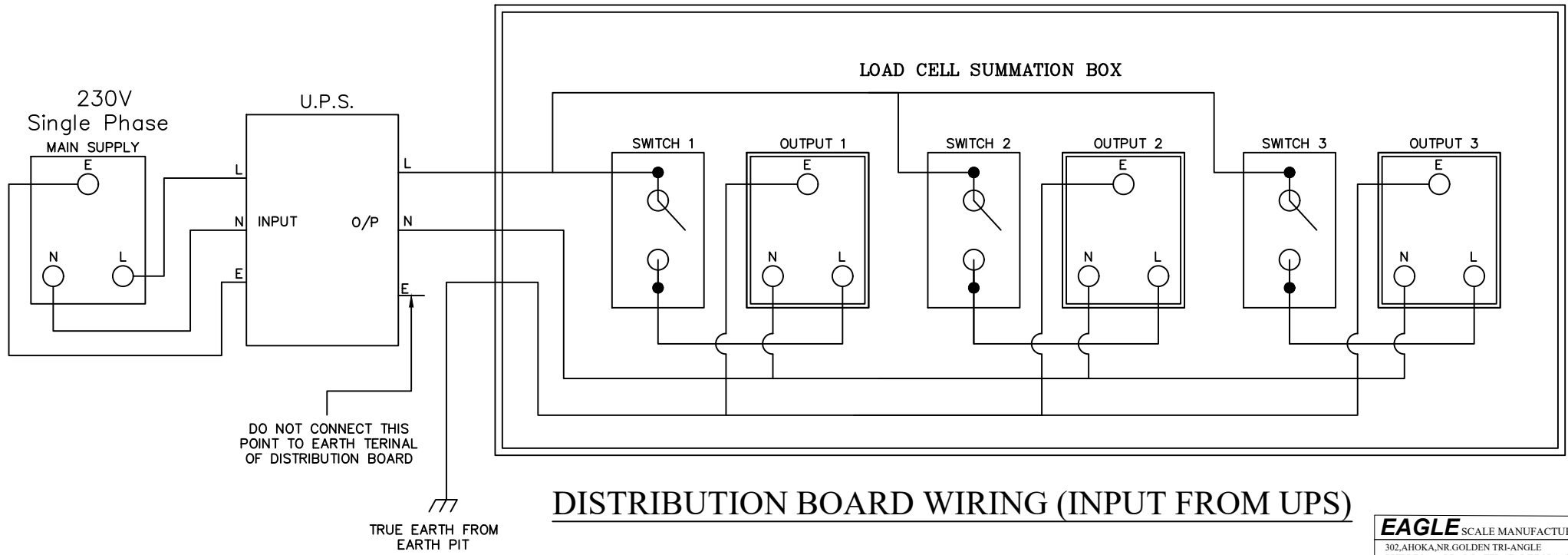
1000  
APPROX.

TO W/B INDICATOR  
25 MM DIA PVC PIPE



<b>EAGLE</b> SCALE MANUFACTURING WORKS		
302,AHOKA,NR.GOLDEN TRI-ANGLE BUILDING,SARDAR PATEL STADIUM ROAD AHMEDABAD - 380 014 GUJARAT,INDIA		
PARTY NAME :		
CAPACITY :	DATE : 13/ 09/2022	
	SIZE :	
	SCALE : NTS	
NIRAJ DRAWN BY:	HARSHAD CHECKED BY :	REV DRG NO : 08
<b>CABLE TRAY LAYOUT</b>		

# DISTRIBUTION BOARD



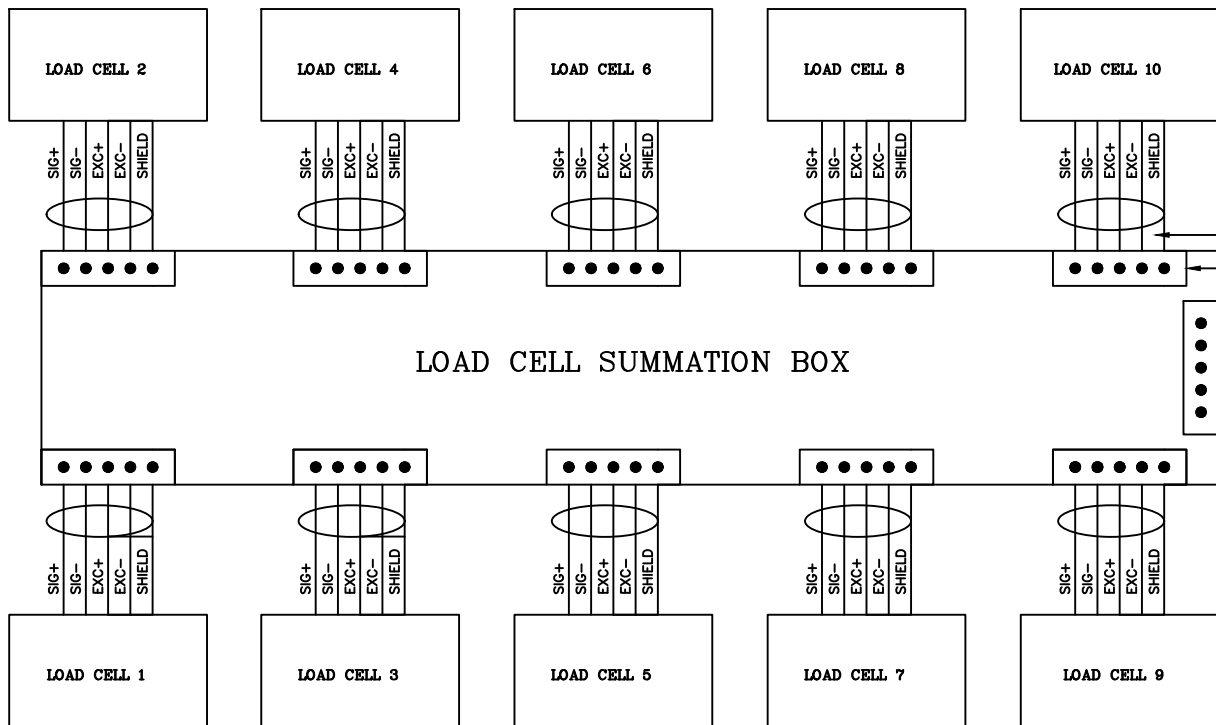
DO NOT CONNECT THIS POINT TO EARTH TERMINAL OF DISTRIBUTION BOARD

TRUE EARTH FROM EARTH PIT

## DISTRIBUTION BOARD WIRING (INPUT FROM UPS)

<b>EAGLE</b> SCALE MANUFACTURING WORKS		
302, AHOKA, NR. GOLDEN TRI-ANGLE BUILDING, SARDAR PATEL STADIUM ROAD AHMEDABAD - 380 014 GUJARAT, INDIA		
PARTY NAME :		
CAPACITY :	DATE : 19/06/2021	
		SIZE : 18 X 3M
DWG NO : 04		SCALE : NTS
HIRVA DRAWN BY :	HARSHAD CHECKED BY :	REV DRG NO : 04
DISTRUBUSTION BOARD WIRING		

SUMMATION BOX



LOAD CELL SUMMATION BOX

INTERCONNECTING CABLE

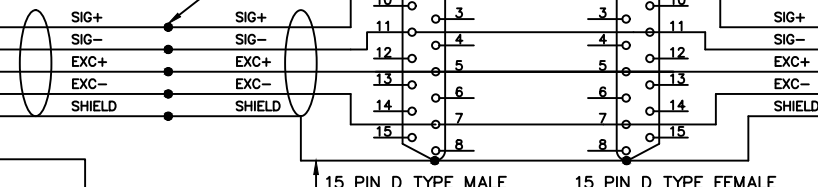
CONNECT THIS END OF SHILD AT SHILD POINT OF SCREW TERMINAL (FOLLOW THIS FOR EACH LOAD CELL)

CONNECT AND SOLDER AT INSTOLATION SCALE SITE

SREW TERMINAL FOR LOAD CELL CONNECTION

WEIGHT INDICATOR

REAL PANEL OF THE WEIGHT INDICATOR



CONNECT THIS END OF SHIELD AT SHIELD POINT OF SCREW TERMINAL

15 PIN D TYPE MALE

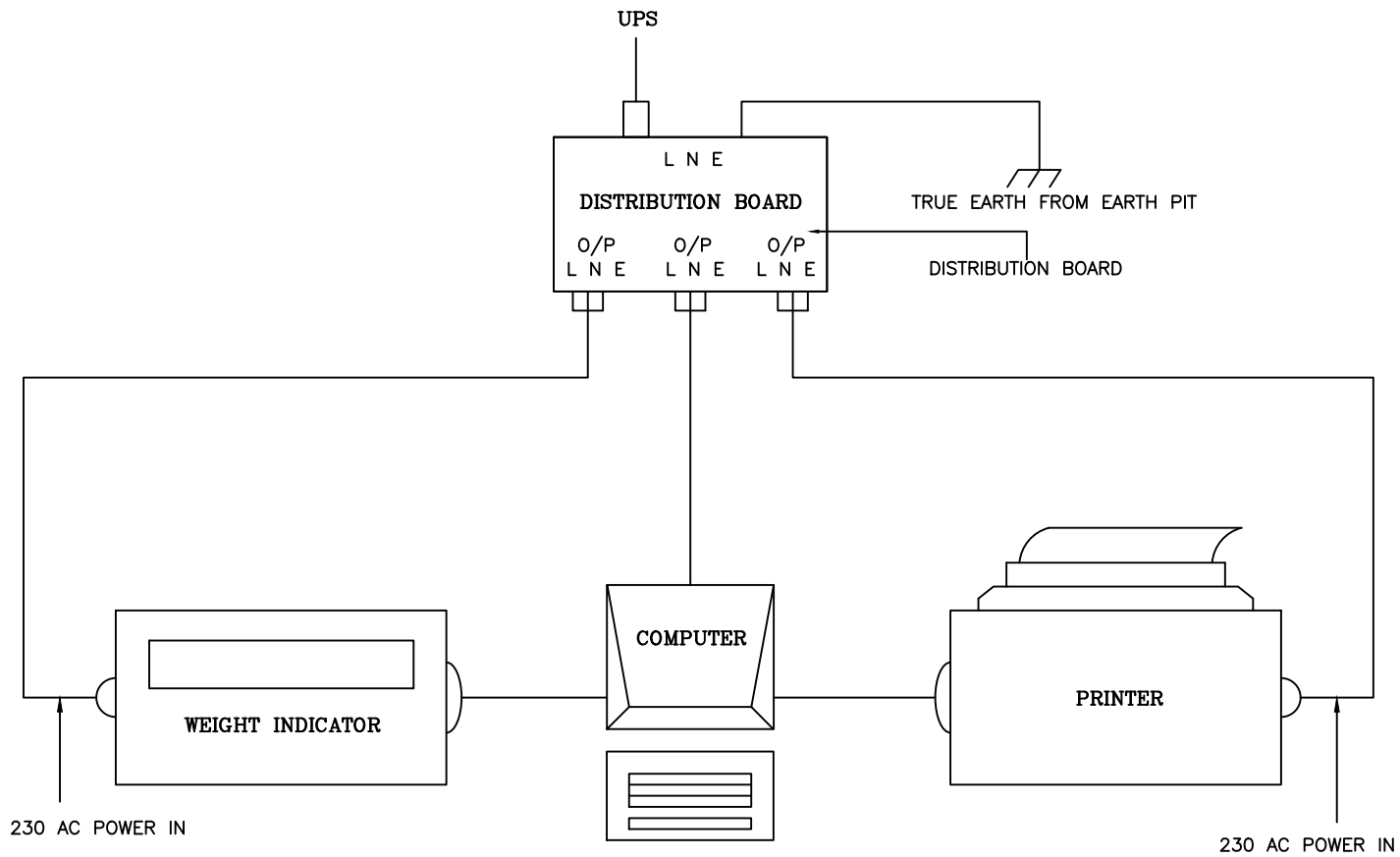
15 PIN D TYPE FEMALE

GREEN WIRE PROVIDED WITH LOAD CELL CONNECTOR

CONNECTION DETAILS FOR SUMMATION BOX AND WEIGHT INDICAOR

<b>EAGLE</b> SCALE MANUFACTURING WORKS			
302.AHOKA.NR.GOLDEN TRI-ANGLE BUILDING,SARDAR PATEL STADIUM ROAD AHMEDABAD - 380 014 GUJARAT,INDIA			
PARTY NAME :		DATE :	
CAPACITY : 100 TON		DATE :	
PO NO :		DATE :	
DWG NO : 4		SCALE : NTS	
HIRVA	HARSHAD	REV DRG NO : 0	
DRAWN BY :		CHECKED BY :	
CONNECTION DETAILS FOR SUMMATION BOX AND WEIGHT INDICAOR			

CONNECTION DETAIL FOR PRINTER AND WEIGHT INDICATOR



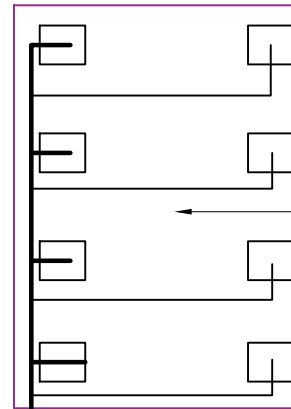
<b>EAGLE</b> SCALE MANUFACTURING WORKS		
302,AHOKA,NR.GOLDEN TRI-ANGLE BUILDING,SARDAR PATEL STADIUM ROAD AHMEDABAD - 380 014 GUJARAT,INDIA		
PARTY NAME :		
CAPACITY :	DATE : 19/06/2021	
	SIZE : 18X3 M	
DWG NO : 03	SCALE : NTS	
HIRVA DRAWN BY	HARSHAD : CHECKED BY :	REV DRG NO : 03
PRINTER&WEIGHT INDICATOR CONNECTION FOR W/B		



ELECTRIC BOARD  
3 - PIN SOCKET OF  
5A. - 5 NOS.

COPPER WIRE  
DIA . 8 MM

TO WEIGHBRIDGE  
PLATFORM & LODE  
CELL



WEIGHBRIDGE  
PLATFORM

G.I. STRIP  
2" WID & 5 MM THK

G.I.PIPE 2.5

PIT AREA : 2' X 2'  
DEEP - 5'

SOIL

10 MM

COPPER PLATE

COPPER PLATE  
300 X 300 X 8 THK

MIXTURE OF  
SALT & C.COAL 1:3 R

**NOTES :-**

- FOR GETTING STABILITY EARTHING IS VERY IMPORTANT BEFOUR USING THE WEIGHBRIDGE.
- EARTH PIT SHALL BE IN L & T'S SCOPE OF SUPPLY.

**EAGLE** SCALE MANUFACTURING WORKS

302,AHOKA,NR.GOLDEN TRI-ANGLE  
BUILDING,SARDAR PATEL STADIUM ROAD  
AHMEDABAD - 380 014 GUJARAT,INDIA

PARTY NAME :

CAPACITY :

DATE : 29/07/2020

SIZE :

DWG NO : 04

SCALE : NTS

HIRVA

HARSHAD

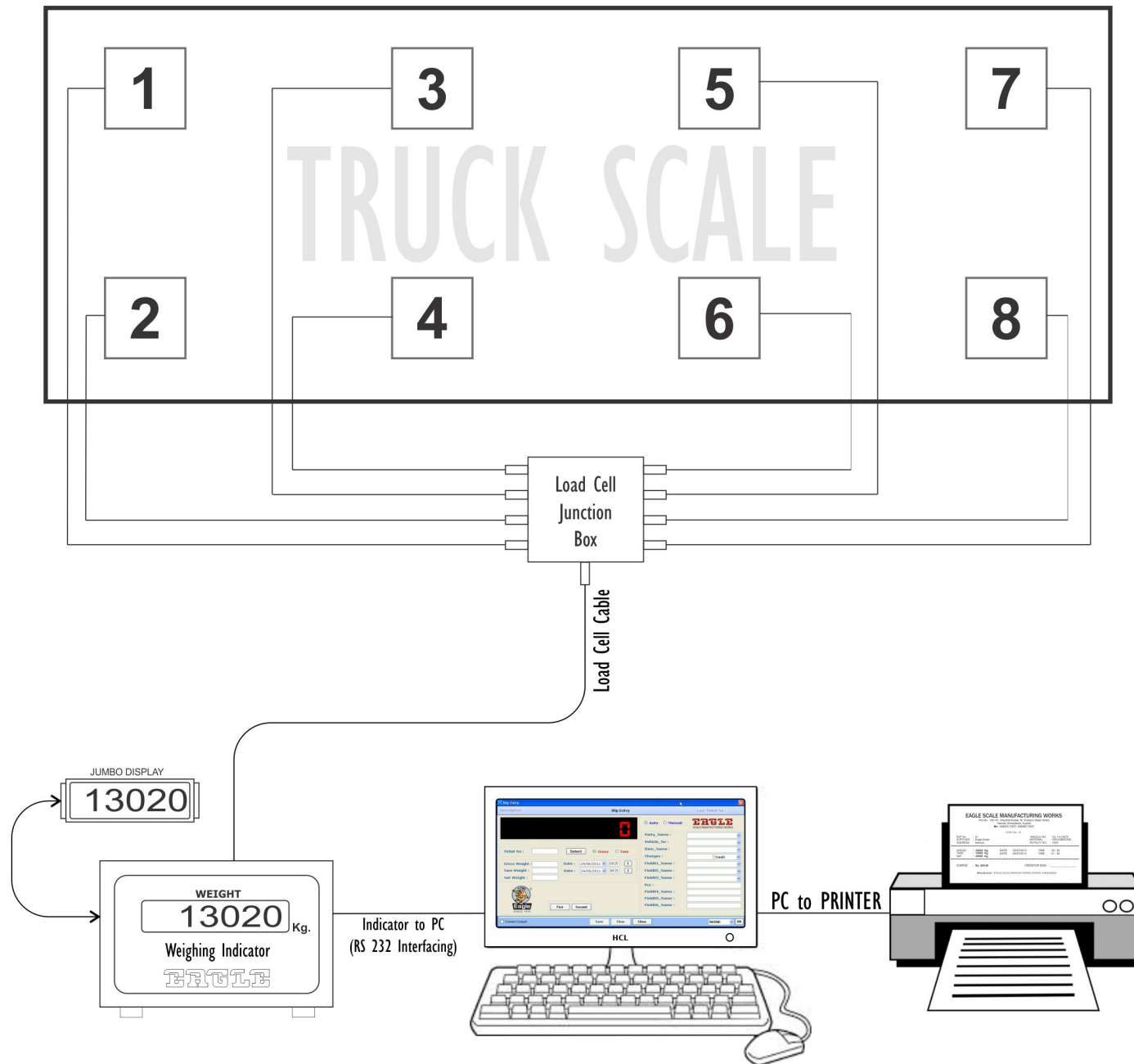
REV DRG NO : 0

DRAWN BY

: CHECKED BY :

EARTHING DETAILS FOR WEIGHBRIDGE

# GENERAL ARRANGEMENT OF TRUCK SCALE PC BASED SYSTEM





# TRUCK SCALE CARE AND MAINTENANCE

Truck Scale care and maintenance is vitally important and requires a team effort. It involves co-operation between vehicle drivers, the truck scale owner, the truck scale operator and the truck scale servicing company such as **EAGLE SCALE** performing some basic maintenance checks periodically will ensure your truck scale will continue to operate effectively and reliably long into the future.

## Driver Responsibility

### APPROACH THE WEIGHBRIDGE SLOWLY

Using excessive speeds on the truck scale will cause shock loading on the load cells. Minimize entry and exit speed to below 5 kmh and keep speed constant.



### DO NOT HIT THE BREAKS

Sudden or harsh breaking on the truck scale will cause shock loading on the load cells and mounts.



## Owner Responsibility

### KEEP THE TRUCK SCALE CLEAN

Trading standard legislation requires your truck scale to be clean at all times. A build up of material on and beneath the truck scale deck will trap water and more material. This will reduce the life of your truck scale and its components and affect weighing performance.



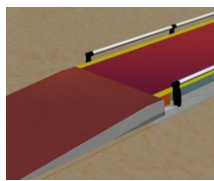
### KEEP DRAINAGE CLEAN

Make sure any drainage facilities for pit mount truck scale do not become blocked and cause flooding.



### MAINTAIN THE APPROACHES

Ensure the approaches to the deck are kept clear and clean. They must be repaired as required.



Also remember to clean any oil/fuel spillages from the ramps and deck.

### ENSURE REGULAR SERVICING

Load Cells and load cell assemblies should be inspected regularly for damage or build up or material. The truck scale calibration should also be checked regularly.



Contact Eagle Scale to ensure servicing is carried out efficiently and effectively.

### DO NOT WELD ON TRUCK SCALE

Electric welding involves the transfer of high current which can easily destroy electronic circuits and load cells.



Contact us for advice if welding is required.

### USE A GOOD QUALITY POWER SOURCE

A Truck Scale is a precision instrument and deserves to have a good quality, stable power source.



Avoid using a generator or source that shares a line with starting motor or other current destabilizing machinery.

Use only a reputed truck scale servicing company such as **"EAGLE SCALE MANUFACTURING WORKS"**

If you notice any fault with your truck scale contact your service provider immediately. Delaying attention could compound the issue and turn a minor fault into a major repair.

We have the experience and resources to perform quality servicing, and we carry a large range of spare parts to ensure a quick service turn-around



# TRUCK SCALE



We Make Weighing Easy....



## WEIGHBRIDGE INSTALLATION REQUIREMENTS.....

We will send our Service Engineer at your site for installation of Weighbridge, Please Check & Ready below Points.

### PLATFORM STRUCTURE INSTALLATION

- Civil Foundation as per our Drawing and send us foundation photographs for our reference.
- Hydro / Crane for Platform Structure Unloading & Installation.
- Separate Earthing Near Platform.
- Jack & Tommy for Load Cell Mounting.
- 3 - 4 unskilled labors.
- Welding Machine (If Required).



### ELECTRONICS INSTALLATION

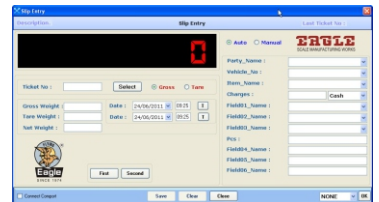
- Weighbridge Cabin.
- Both End RCC / PCC for Truck In & Out
- Electric Power Supply (Single Phase).
- Electric Switch Board (Minimum 4 to 5 Points : 5 Amp. )
- Table and Chair (Table Minimum 5 Ft X 3 Ft).
- Install Lightning Arrestor on terrace.
- Flexible & U-PVC Pipe for Load Cell Cable wiring.
- 80 Column Blank Stationery for Weighment Slip.



### SOFTWARE INSTALLATION

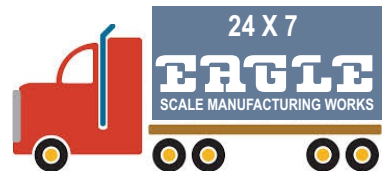
Below Requirement in Computer for Eagle Weighbridge Software Installation.

- Window 7 with on board Communication Port (Rs232)
- Minimum 2 GB Ram
- Dos Command prompt for Dos Print.
- Parallel Port for Dot Matrix Printer



### HOW TO CARE YOUR WEIGHBRIDGE

- Check Earthing Regularly
- Use Lightning Standard Arrestor (Connect With Earthing Pit)
- Use Good Quality Battery & UPS
- Disconnect Power During Lightning
- Do not Weld on Weighbridge Platform
- Maintain the Approaches
- If weighbridge will be struck by lightning, then it is not accountability of **EAGLE SCALE MFG. WORKS.**



## CUSTOMER CARE

Technical Support : +91 98797 86677  
 Technical Support : +91 99099 64591  
 Complain Booking : +91 99099 47012

## EAGLE SCALE MANUFACTURING WORKS

Plot No : 140 / 141, Industrial Estate, Opp. Nobalnager, Nr. Kotarpur Water Works, Naroda, Ahmedabad

E-mail : [customercare@eaglescales.com](mailto:customercare@eaglescales.com)  
 : [response@eaglescales.com](mailto:response@eaglescales.com)

AN ISO 9001 : 2008 COMPANY