

## PANEL NAME PLATE

MANUFACTURER : SCHNEIDER ELECTRIC, TURKEY  
 ORDER NUMBER : S20013.18  
 SWITCHBOARD TYPE : F400  
 APPLICABLE STANDARD : IEC 62271-200  
 SWITCHBOARD TAG NUMBER : S2001318-P1  
 POWER SYSTEM : 36kV / 70kVrms - 1mn/170kV Peak / 3PH - 50Hz  
 SERVICE VOLTAGE : 30kV  
 SHORT CIRCUIT CURRENT : 25kAeff 3s  
 BUSBAR RATING : 1250A  
 DEGREE OF PROTECTION : IP30  
 YEAR OF MANUFACTURE : 2020  
 END USER : DIRECTION REGIONALE ONEE  
 CASABLANCA - BRANCHE ELECTRICITE  
 PROJECT : NUMERISATION PHASE 2 PROJECT

200 mm

300 mm

MATERIAL	PLASTIC
BACKGROUND	WHITE
LETTERS	BLACK
FONT SIZE	10MM

REVISIONS : A



CUSTOMER NAME MÜŞTERİ ADI  
 KAZINOV  
 PROJECT DESCRIPTION PROJE TANIMI  
 NUMERISATION PHASE 2 PROJECT

PAGE DESCRIPTION SAYFA TANIMI  
 PANEL NAME PLATE  
 DRAWING DESCRIPTION ÇİZİM TANIMI  
 SINGLE LINE DIAGRAM

PROJECT PROJE  
 S20013.18  
 bFO OPP #  
 OP-18.1014-7817186

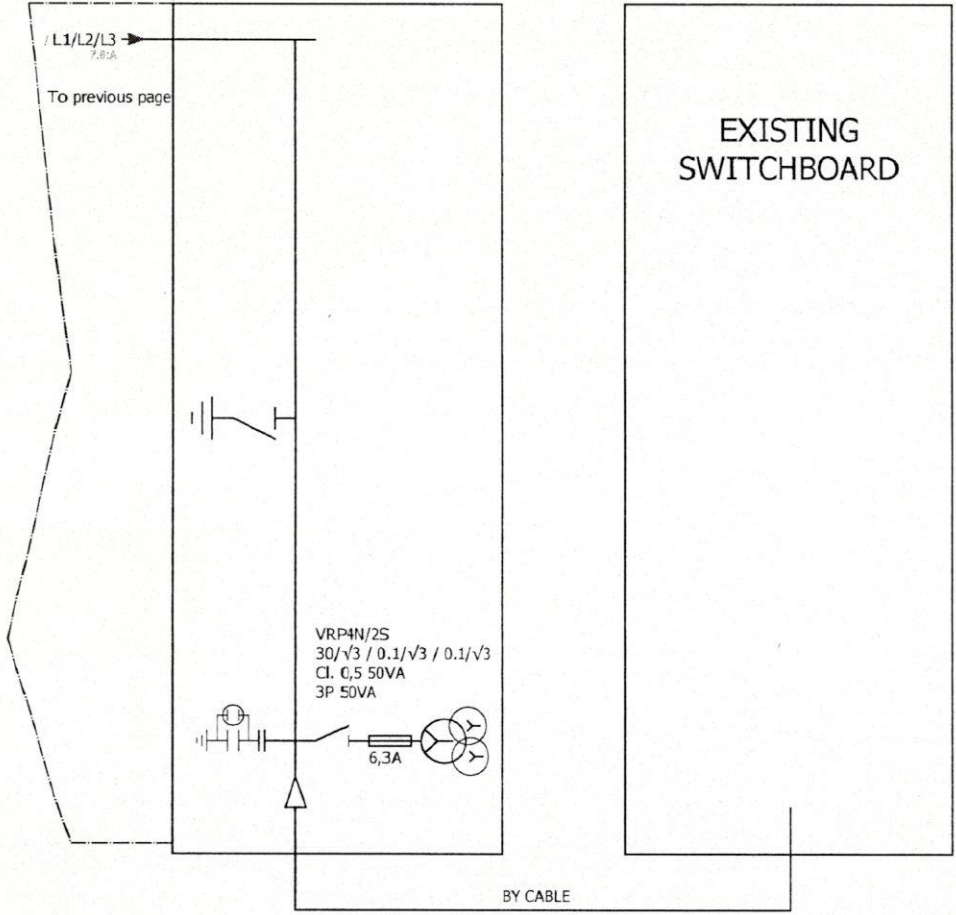
DRAWING NUMBER / ÇİZİM NUMARASI  
 S2001318-P1

PAGE SAYFA  
 6 / 12





Ur: 36kV Un: 30kV Ir: 1250A Ik / tk: 25kAeff 3s fr: 50Hz t: 40°(standard)



CABLE TYPE / SECTION	2 x 3 x 630mm2
CUBICLE NUMBER	1-4
CUBICLE TYPE	RD6
CUBICLE NAME	INCOMER
DRAWING REFERANCE	S2001318-01


REVISIONS : A



SCHNEIDER ELECTRIC TURKEY  
 CUSTOMER NAME MÜŞTERİ ADI  
 KAZINOV  
 PROJECT DESCRIPTION PROJE TANIMI  
 NUMERISATION PHASE 2 PROJECT

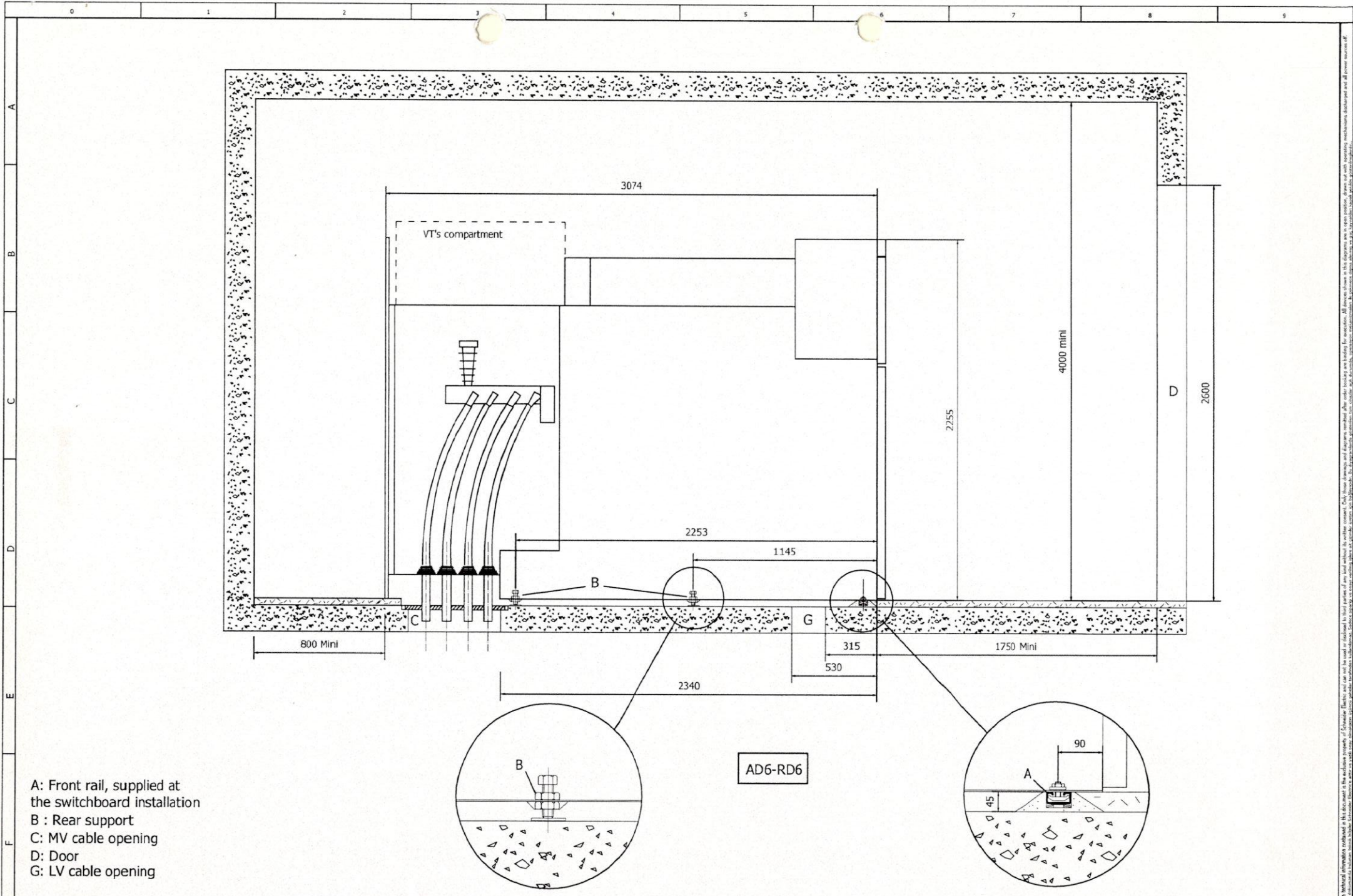
PAGE DESCRIPTION SAYFA TANIMI  
 SINGLE LINE DIAGRAM  
 DRAWING DESCRIPTION ÇİZİM TANIMI  
 SINGLE LINE DIAGRAM

PROJECT PROJE  
 S20013.18  
 DFO OPP #  
 OP-181014-7817186

DRAWING NUMBER / ÇİZİM NUMARASI  
 S2001318-P1

The technical information contained in this document is the property of Schneider Electric. It is intended for use by the customer for the project for which it was prepared. It is not to be used for any other purpose without the express written consent of Schneider Electric. Schneider Electric is not responsible for any errors or omissions in this document. Schneider Electric is not responsible for any damage or loss of data resulting from the use of this document. Schneider Electric is not responsible for any damage or loss of data resulting from the use of this document. Schneider Electric is not responsible for any damage or loss of data resulting from the use of this document.





- A: Front rail, supplied at the switchboard installation
- B : Rear support
- C: MV cable opening
- D: Door
- G: LV cable opening

REVISIONS :	A								
-------------	---	--	--	--	--	--	--	--	--



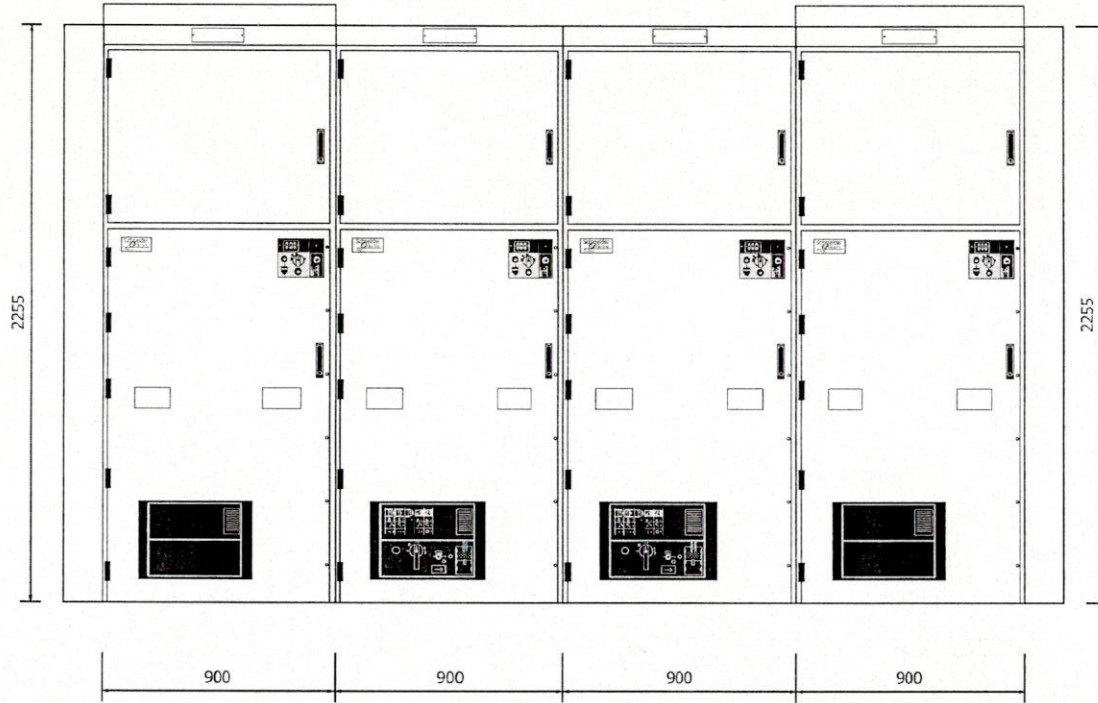
SCHNEIDER ELECTRIC, TURKEY  
 CUSTOMER NAME MÜŞTERİ ADI  
**KAZINOV**  
 PROJECT DESCRIPTION PROJE TANIMI  
 NUMERISATION PHASE 2 PROJECT

PAGE DESCRIPTION SAYFA TANIMI  
 SIDE VIEW  
 DRAWING DESCRIPTION ÇİZİM TANIMI  
 SINGLE LINE DIAGRAM

PROJECT PROJE  
**S20013.18**  
 DFO OPP #  
 OP-181014-7817186

DRAWING NUMBER / ÇİZİM NUMARASI  
**S2001318-P1**

The technical information contained in this document is the exclusive property of Schneider Electric and can not be used or disclosed to third parties in any form or by any means without the written consent of Schneider Electric. Schneider Electric is not responsible for any errors or omissions in this document. All dimensions shown in this diagram are in open position, unless otherwise specified.



CUBICLE NUMBER	1-1	1-2	1-3	1-4
CUBICLE TYPE	RD6	AD6	AD6	RD6
CUBICLE NAME	INCOMER	FEEDER	FEEDER	INCOMER

For installation and civil engineering refer to leaflets:  
07897172EN  
07897174EN

REVISIONS : A



SCHNEIDER ELECTRIC, TURKEY  
CUSTOMER NAME MÜŞTERİ ADI  
KAZINOV  
PROJECT DESCRIPTION PROJE TANIMI  
NUMERISATION PHASE 2 PROJECT

PAGE DESCRIPTION SAYFA TANIMI  
FRONT VIEW  
DRAWING DESCRIPTION ÇİZİM TANIMI  
SINGLE LINE DIAGRAM

PROJECT PROJE  
S20013.18  
BFO OPP #  
OP-181014-7817186

DRAWING NUMBER / ÇİZİM NUMARASI  
S2001318-P1

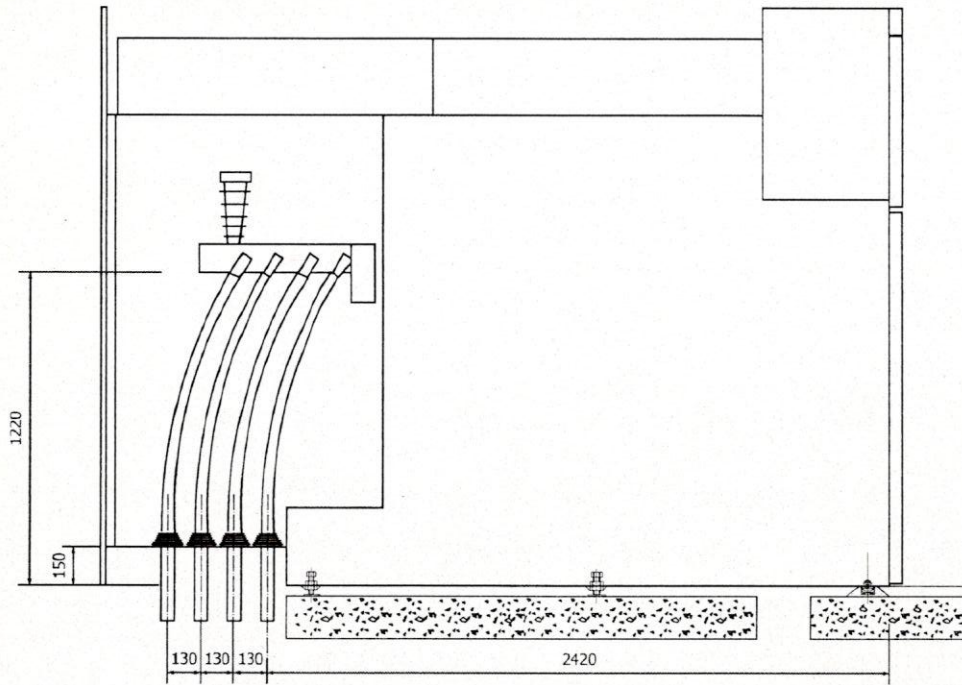
PAGE SAYFA  
10 / 12

Bu çizim, Schneider Electric tarafından hazırlanmıştır. Çizimdeki tüm bilgiler, Schneider Electric'in teknik dokümanlarındaki bilgilerle uyumlu olmalıdır. Çizimdeki tüm bilgiler, Schneider Electric'in teknik dokümanlarındaki bilgilerle uyumlu olmalıdır. Çizimdeki tüm bilgiler, Schneider Electric'in teknik dokümanlarındaki bilgilerle uyumlu olmalıdır.

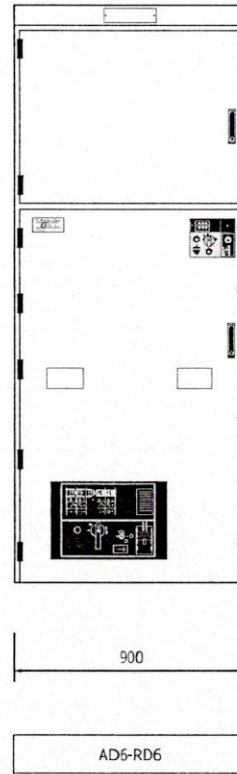




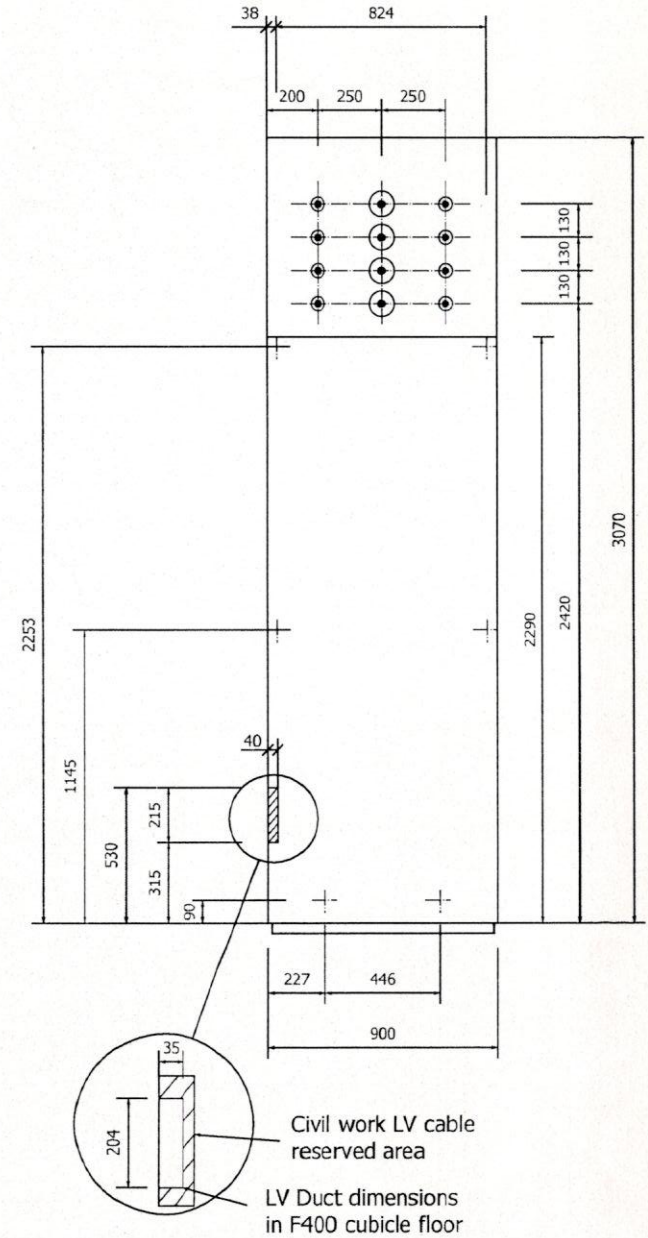
Left view



Front view



Floor impact



REVISIONS : A

SCHNEIDER ELECTRIC TURKEY  
**Schneider Electric**

CUSTOMER NAME MÜŞTERİ ADI:  
 KAZINOV  
 PROJECT DESCRIPTION PROJE TANIMI  
 NUMERISATION PHASE 2 PROJECT

PAGE DESCRIPTION SAYFA TANIMI  
 ARRANGEMENT  
 DRAWING DESCRIPTION ÇİZİM TANIMI  
 SINGLE LINE DIAGRAM

PROJECT PROJE  
 S20013.18  
 BFO OPP #  
 OP-181014-7817186

DRAWING NUMBER / ÇİZİM NUMARASI  
 S2001318-P1

PAGE SAYFA  
 12 / 12

Bu belge Schneider Electric'in mülkiyetindedir. İçerdiği bilgileri başka bir amaçla kullanılmaması için dikkatli kullanılmalıdır. Schneider Electric'in sorumluluğunda değildir. Bu belgeyi kullanmadan önce lütfen teknik dokümanları okuyunuz.