

**An Ecosystem  
to serve the  
Industrialization  
of Congo**

# Message from **THE PRESIDENT**

The 2021-2026 Social project of the Republic of Congo is focused on the industrialization of the country. The implementation of this ambitious plan to structurally transformation our economy, is based on the development of four existing special economic zones (SEZs) including Pointe-Noire, Brazzaville, Ollombo-Oyo and Ouessou. In the same vein, the Government of the Republic chose the development of SEZs as the third pillar of the National Development Plan (NDP) 2022-2026.

Consequently, to prioritize and involve the local labor in the construction of the Pointe-Noire Special Economic Zone, 350 young people were called to receive training in Construction, thus obtaining the necessary skills required to fully contribute to the realization of our nation's plan.

## **His Excellency Mr. Denis Sassou Nguesso**

President







At the dawn of the opening of the continental free trade zone, our country located in the heart of Africa must be a strategic hub for production, processing and distribution. It is in this perspective that the government of the Republic of Congo has decided to trust the ARISE group to ensure the development of 3 special economic zones in our country.

## **Mr. Denis Christel SASSOU NGUESSO**

Minister for International Cooperation and  
Public-Private Partnerships (PPP)



We welcome the partnership with the Arise IIP Group which, through the Industrial Platforms of Congo Pointe-Noire (PICP), is working hard to, in particular, make the Special Economic Zone of Pointe-Noire operational which, on relying on sectors with high growth potential, will become the driving force of development of a diversified and resilient economy, enabling inclusive growth and sustainable economic development, creating jobs and bringing wealth.

## **Mr. Jean-Marc THYSTERE TCHICAYA**

Minister of Special Economic Zones and  
Economic





## ABOUT CONGO

The Republic of Congo, also known as Congo-Brazzaville, located in the heart of the African continent, is bordered by Gabon to the west, Cameroon to the northwest and the Democratic Republic of Congo to the southeast.

Congo is a nation rich in natural resources with vast untapped opportunities in sectors like Forestry as it is currently the 3rd largest exporter of roundwood. With its abundant natural resources, Congo has the potential to become a major player on the global industrial stage. The country is rich in copper, iron ore, diamonds, gold and other valuable minerals, as well as substantial reserves of natural gas. This wealth of resources positions Congo as a formidable force in the global economy.

Congo is a haven for premium quality timber, boasting an array of wood varieties that are perfect for a range of processing techniques such as sawn wood, veneer, plywood, and furniture making. The country's timber resources are of exceptional quality, making it a valuable asset to the wood processing industry.

Republic of Congo is one of the most stable and secure African Nations.





## Republic of Congo: advancing economic interests through multiple African agreements:

### **CEMAC**

**(Economic and Monetary Community of Central Africa):**

Free trade among 6 member states with a community of over 52 million people.

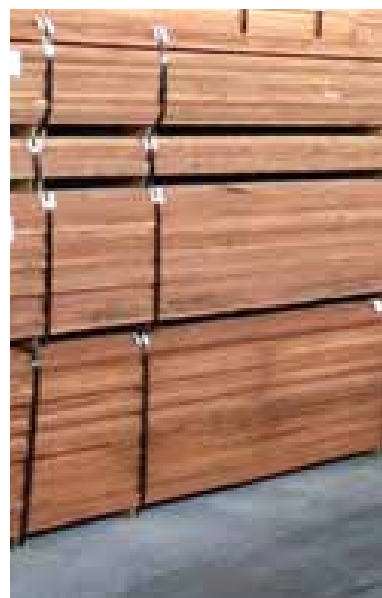
### **ECCAS**

**(Economic Community of Central African States):**

Promotes economic integration and cooperation among its member countries, which are located in Central Africa.

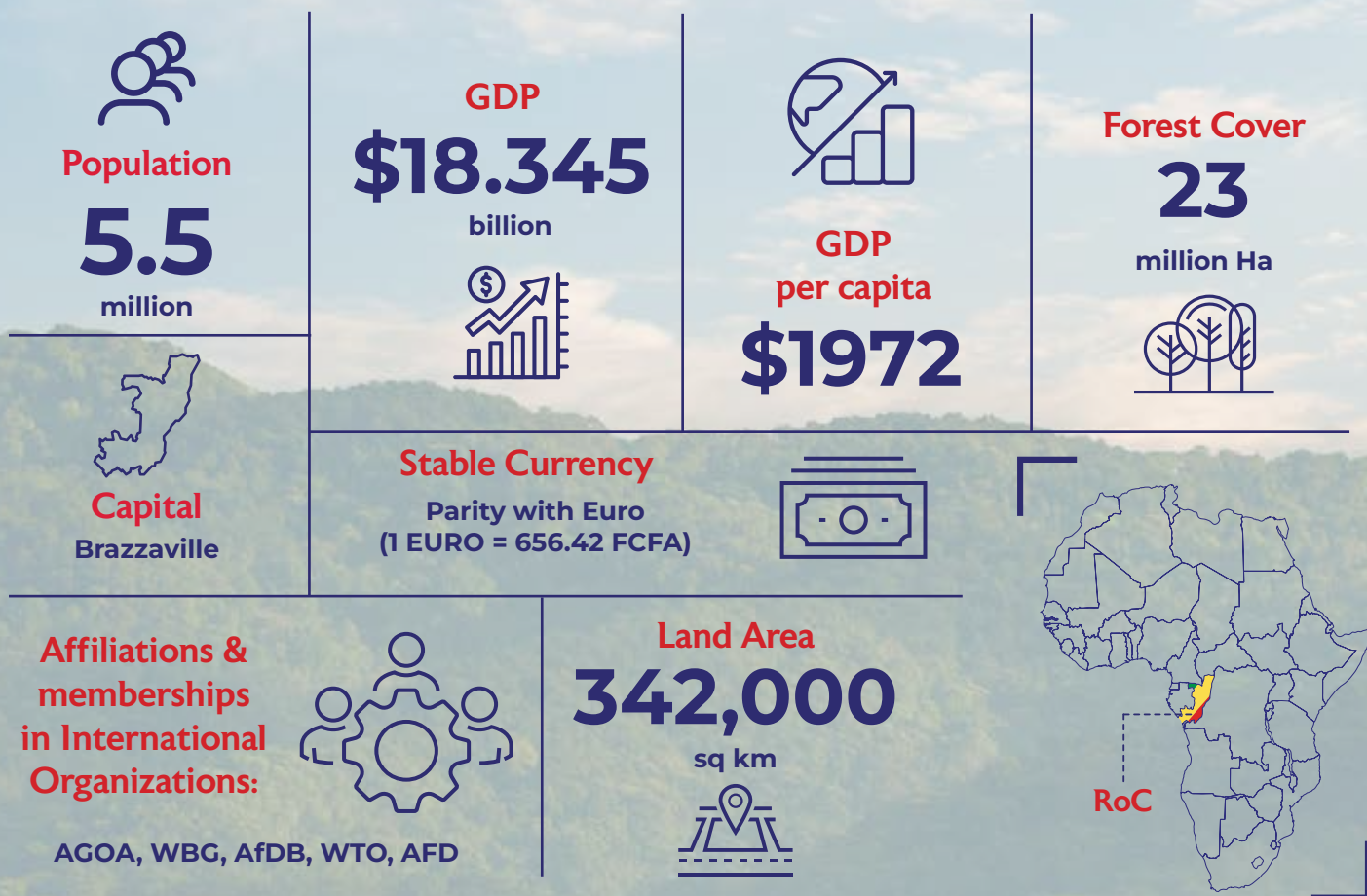
### **African Union:**

A continental union comprising 55 member states from the African continent, working together to promote peace, security, and economic integration.





## Key Information



## Congo's Natural Abundance

Abundant petroleum resources at highly competitive rates

### Key Facts & Figures



**70%**  
land in the country  
is forest land



**4<sup>th</sup>**  
largest exporter of Timber  
products in Africa



**3<sup>rd</sup>**  
largest exporter of  
Roundwood in Africa



**4<sup>th</sup>**  
largest oil producer in the  
Gulf of Guinea





A Public-Private Partnership between  
The Government of RoC & Arise IIP

## ABOUT PICP

The agreement between Republic of Congo and Arise IIP has been formalized for the development of two state-of-the-art industrial zones, PIC in Pointe-Noire (PICP) and PIC in Oyo (PIC Oyo).

We are a Public Private Partnership between the government of Republic of Congo and ARISE IIP.  
We are developing two state-of-the-art industrial zones

- ✓ PICP is one of the latest additions to Arise IIP's chain of integrated industrial ecosystems, which springs from a public-private partnership venture between the Republic of Congo and Arise IIP signed in 2022
- ✓ PICP is focused on the strategic development of the Congolese economy via integrated value chains ranging from the reliable supply of raw materials to efficient processing of resources (manufacturing), to the export of finished products.
- ✓ PICP aims to provide investors with a gateway to the African landscape by providing state-of-the-art infrastructure and facilities, a conducive business atmosphere and accompanying them along the entire value chain of their products, through our ecosystem approach.
- ✓ The PICP, divided into three sectors: industrial, commercial, and residential, is strategically located in the largest export hub of Congo, just 15kms away via the N5 motorway. The PICP will offer proximity (10kms) to the Autonomous Port of Pointe-Noire via jetty that would be built in the zone. In addition, PICP has a single window, a police station, and a fire station among many other facilities.





Discover the unlimited opportunities in PICP, where growth knows no bounds

**Zone Area:**

500 Ha (Phase 1);  
2200 Ha (Phase 2)

**5000**

direct jobs to be created  
by 2024

**Assured Timber Supply:**

**3 million** Ha of forest  
dedicated to the SEZ

**Eucalyptus plantation:**

**25,000 Ha** available  
to the SEZ

**Dedicated supply of  
Natural Gas at highly  
competitive rates**

INVEST IN  
**CONGO**

- ✔ Strategic geographical position making Congo a gateway to over 52 mn consumers in the CEMAC region and to European, Asian and American markets.
- ✔ Congo is endowed with the world's largest reserves of untapped natural resources, and countless business opportunities.
- ✔ A continuously improving business climate supported by several business incentive reforms.
- ✔ PICP is committed to ensuring that its local and foreign investors participate in thriving and diverse value chains, while creating long-lasting and sustainable processing in Congo.
- ✔ An abundant and skilled labor force.
- ✔ A stable political and democratic environment and an economy with strong potential for growth.
- ✔ Congo has implemented a National Development Plan (NDP) to foster economic diversification and industrial growth via a robust structural change plan.



# KEY INVESTMENT SECTORS



## Timber Processing

- ✓ Sawn Wood
- ✓ Plywood
- ✓ MDF
- ✓ Veneer
- ✓ Furniture
- ✓ Paper & Pulp



## Pharmaceuticals



## Metals refining & processing



## Textiles



## Construction material



## Methanol Processing



## Agro-processing



## Plastic recycling



## Consumer Electronics



## Ceramics

# CONNECTIVITY & INTEGRATED LOGISTICS

- ✓ Dedicated and direct access to the Autonomous Port of Pointe-Noire via jetty (**10km**) and via road (**15km**)
- ✓ Excellent road connectivity to the main international airport in Pointe-Noire (**17km**)
- ✓ Major railway line connecting to the capital of the country – Brazzaville





WORLD-CLASS

# INFRASTRUCTURE



Industrial zone



Commercial zone



Residential zone



Dedicated Power Supply



Log Park



Hassle-free land provision



Jetty to provide direct access to the autonomous port of Pointe-Noire



Green Spaces



Sewage treatment plant



Loading and unloading facility



Natural Gas supply



**PICP**  
Plateforme Industrielle du Congo  
Pointe-Noire

**PICP**  
Plateforme Industrielle du Congo  
Pointe-Noire



---

## FEATURES OF THE SEZ

- ✓ Total investment: 150 million Euros in phase 1
- ✓ Assured raw material supply of Timber, Natural Gas, and Mineral Ores
- ✓ Single window clearance for express-line processing of all business formalities
- ✓ Cleared, flat and sound land readily available for construction
- ✓ Uninterrupted and affordable doorstep connection of key utilities – electricity, water and internet
- ✓ Internal road network
- ✓ River port inside the zone with jetty, to facilitate transportation of goods to and from the autonomous port of Pointe-Noire
- ✓ Fire station, police station, medical center, etc.
- ✓ 24/7 accessible fueling station
- ✓ 24/7 monitoring cameras
- ✓ Wastewater and sewage treatment plants

---

## ADVANTAGES OF PICP

### Unique tax system

#### Corporate Tax

- ✓ 0% for the first 10 years
- ✓ 10% after 10 years

#### Special Corporate Tax

- ✓ 0% for the first 10 years
- ✓ 50% reduction starting from the 11 years

#### Value Added Tax (VAT)

- ✓ Applied on the acquisition of goods, works, services rendered, and imports.

#### Registration Fees

- ✓ Applied for company creation and capital increases.

#### Tax on Income from Securities

- ✓ 0% for the first 10 years
- ✓ Reduced rate of 5% from the 11 years onward

#### Business License Tax (Patent Contribution)

- ✓ 0% for the first 10 years
- ✓ 50% reduction starting from the 11 years

#### Customs Duties

- ✓ Full exemption on raw materials, equipment, machinery, tools, utility vehicles, and tooling.

#### Export Taxes

- ✓ Products manufactured within the special economic zone are exempt from customs duties and export taxes

---

## SINGLE WINDOW CLEARANCE

A dedicated one-stop shop bringing together all the services and agencies concerned to take care of the following formalities:

- ✓ Company registration
- ✓ Tax
- ✓ Immigration – visas, work permits/ residence card
- ✓ Exoneration on various duties and taxes
- ✓ Customs
- ✓ Environmental permits
- ✓ Construction permits Etc.

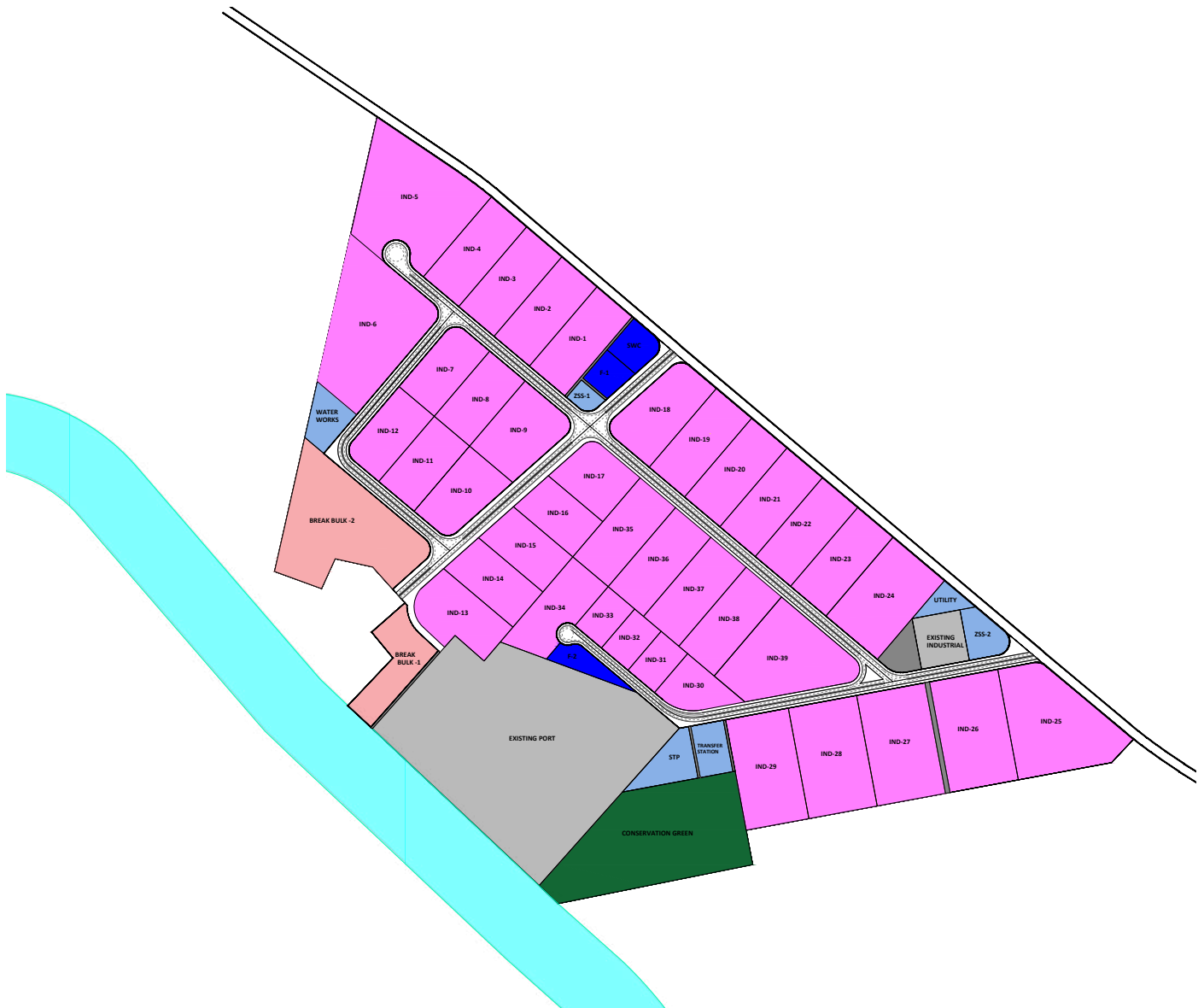


The map illustrates the Port of Loango's layout, featuring a central industrial zone (IND-01 to IND-77F) surrounded by conservation areas (CONSERVATION AREA 1, 2, 3, 4). A 200m buffer zone and shore line are marked. Infrastructure includes a port and jetty, a logistic zone (warehouse & ICD), a waste recycling & incineration complex, and a logistic zone (breakbulk). The map also shows a network of roads and a railway line.



# OYO

## MASTER PLAN







# SUSTAINABILITY

At Plateformes Industrielles du Congo Point-Noire (PICP), we are committed to sustainable development and strive to make a positive impact on the communities and environment in which we operate. Our initiatives are carefully planned and implemented through close collaboration with government regulators, civil society groups, and other stakeholders. Our parent company, ARISE IIP, has embraced the philosophy of 'growing with society' which means sharing benefits in a transparent and mutually beneficial manner. Our sustainability initiatives align with the United Nations Sustainable Development Goals and are designed to improve the standard of living for all, provide benefits and opportunities for local communities, and offer technical and vocational training to enhance local capacity. We believe that sustainable development is not just an ethical imperative, but also a key to long-term business success and we are determined to lead the way in creating a better future for all.

We are excited to introduce a cutting-edge industrial platform that will revolutionize the timber processing industry. Our goal is to modernize and drive growth in the wood sector, while keeping sustainability at the forefront of our operations.

From traceability and certification to sustainability, we prioritize these key elements to ensure the responsible and ethical sourcing of timber. We are working closely with major stakeholders in the entire timber value chain to establish a reliable tracking system that minimizes the risk of illegal timber entering our special economic zone.

We are committed to sourcing our raw materials from forest concessions that operate according to sustainable forest management practices, ensuring the availability of responsibly sourced timber for our operations. Join us in our mission to drive sustainable development and growth in the timber industry.



## Carbon Neutrality



Phasing out intensive carbon energy sources through targeted initiatives.

## Diversity & Inclusion



Implementing circular economy principles in our business strategy and operations to reduce resource wastage.

## Circular Economy



Implementing circular economy principles in our business strategy and operations to reduce resource wastage.

## Responsible Supply Chain Management



Proactively identifying and addressing supply chain risks through responsible procurement and enhanced stakeholder engagement.





📍 Plateformes Industrielles du  
Congo, Pointe-Noire, IND-63,  
PICP, Loango, Pointe-Noire

☎ +242 05 207 55 07

✉ [pic-roc@arisenet.com](mailto:pic-roc@arisenet.com)

🌐 [www.pic-roc.com](http://www.pic-roc.com)